

# **TRACK AND FIELD** **OFFICIALS**

**Dr. S. THIRUMALAI KUMAR**

M.P.Ed., M.Sc.,(Psy.) M.Sc.,(Yoga) M.Phil., P.G.D.C.A., P.G.D.A.S.P.E.S., Ph.D.

**Professor & Head**

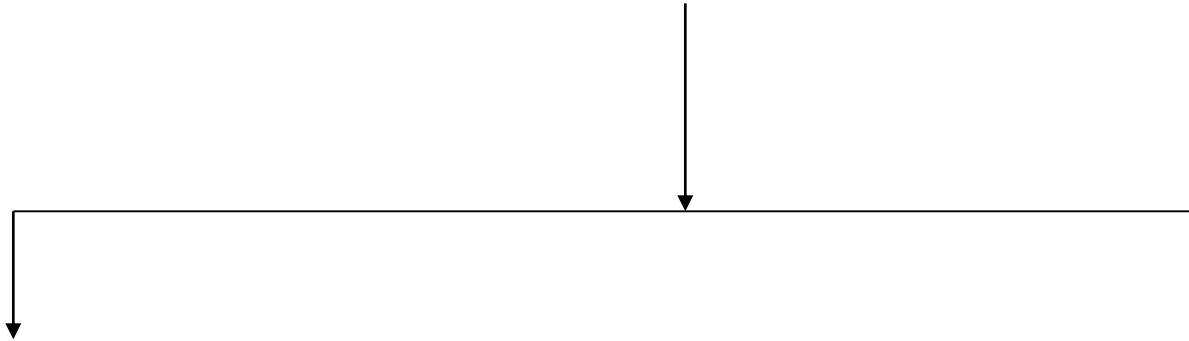
**Department of Physical Education**

**Tamil Nadu Physical Education and Sports University, Chennai-06**

**Programme: BPEd**

**Course : Rules of Games and Sports – Part I**

# OFFICIALS



## International Officials

(Org. Del., Tech. Del., Med. Del.,  
Doping Control Delegates,  
Int.Tec off.(ITOs),/ Int. Cros Count,  
Road Run & Mountain Running Off/  
Area Tech. Officials,  
Int./ Area Race Walking Judges,  
Int. Road Course Measurer  
Int. Starter(s)  
Int. Photo finish Judges  
Jury of Appeal - {3 or 5 or 7})

## Officials of the Meeting

**Management  
Officials**

**Competition  
Officials**

**Additional  
Officials**

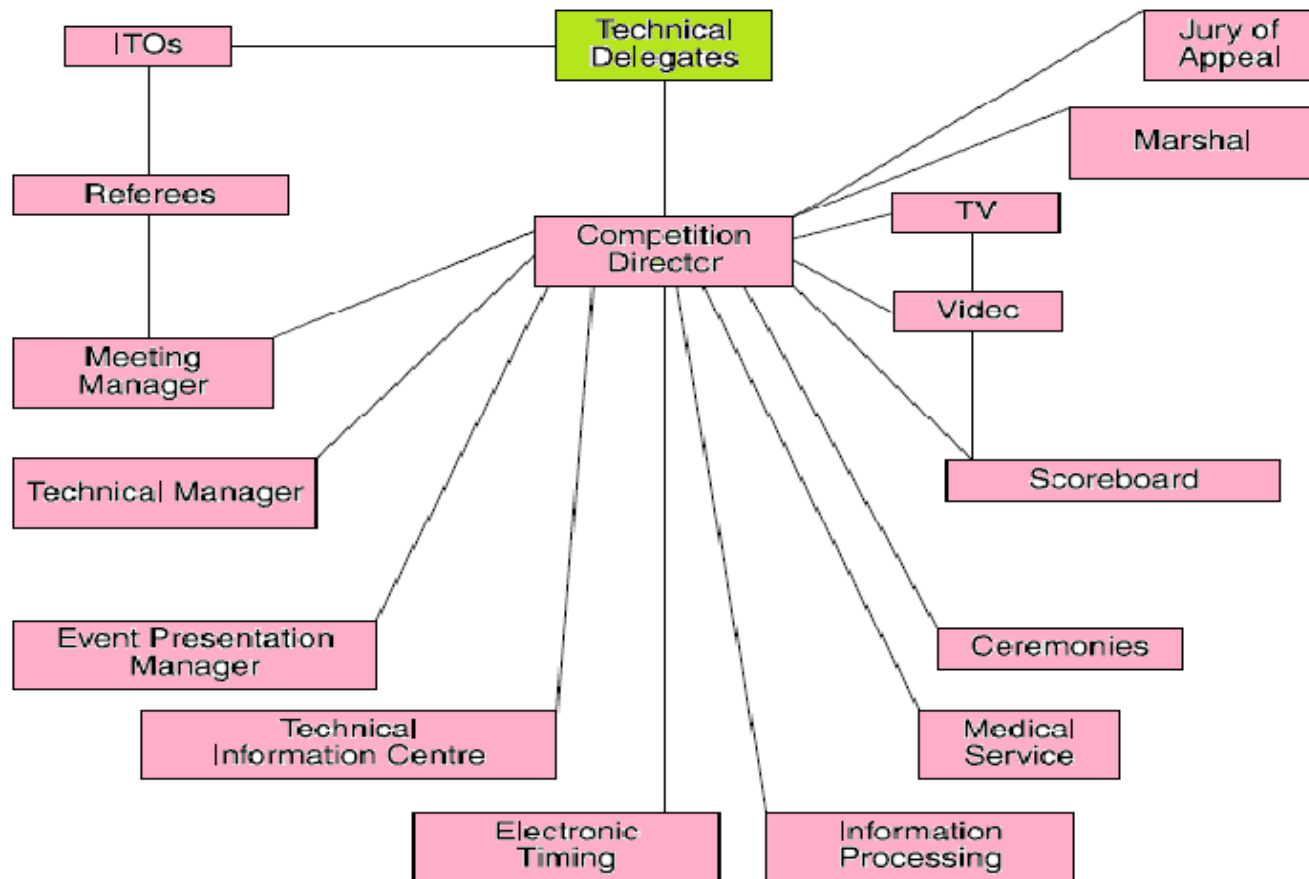
# Organisational Delegates

- The Organisational Delegates shall maintain **close liaison** with the Organising Committee at all times and report regularly to the IAAF.
- They shall deal as necessary with matters concerning duties and financial responsibilities of the Organising Member and the Organising Committee.
- They shall cooperate with the Technical Delegate(s).

# Technical Delegates

- They are a link between the Council and the local Organisation Committee.
- IAAF relies on the Technical Delegates according to the Technical Rules and Regulations.
- They function in an advisory capacity and shall be ready to assist in every way.
- They take part in the planning of the competition
- They shall work in close and open co-operation with the local Organisers and the other Delegates appointed by IAAF.
- The result of the efforts is depending on this teamwork.

# ORGANISING NETWORK



# Technical Delegates (cont)

- **Submit proposals for the timetable of events, the entry standards, implements to be used.**
- **Determine the qualifying standards for the field events,**
- **Determine the basis on which preliminary rounds shall be arranged for track events,**
- **Control the entries and when appropriate reject them for technical reasons,**
- **Arrange the heats and the qualifying rounds and the groups for combined competitions.**
- **Technical Delegate shall chair the Technical Meeting and shall brief the Technical Officials.**
- **The report shall be written with great care as one of its main objects is to serve as guidelines for the organization of future competitions.**

# Medical Delegate

- **The Medical Delegate shall have ultimate authority on all medical matters.**
- **He shall ensure that adequate facilities for medical examination, treatment and emergency care will be available at the site of the competition and that medical attention can be provided where athletes are accommodated.**
- **The Medical Delegate shall also have the authority on determination of the gender of an athlete.**

# Doping Control Delegate

- **The Doping Control Delegate shall liaise with the Organising Committee to ensure that suitable facilities are provided for the conduct of doping control.**
- **He shall be responsible for all matters relating to doping control.**



# International Technical Officials (ITOs) and International Cross Country, Road Running and Mountain Running Officials (ICROs)

- Where ITOs are appointed, the Technical Delegates shall appoint the Chief ITO among the appointed ITOs, if one was not appointed previously.
- Whenever possible, the Chief ITO shall assign at least one ITO for every event on the programme.
- The ITO shall provide all necessary support to the Referee of the event.
- The ITOs must be present at all times when an event to which they have been assigned is in progress.
- They should ensure that the conduct of the competition is in full conformity with IAAF.
- If a problem arises or if they observe any matter which, in their opinion requires comment, they should, in the first instance, bring it to the attention of the Referee of the event and if necessary, offer advice as to what should be done. If the advice is not accepted and if there is a clear infringement of the IAAF Technical Rules, Technical Regulations or decisions made by the Technical Delegates, the ITO shall decide. If the matter is still not resolved it shall be referred to the IAAF Technical Delegate(s).
- At the conclusion of field events they shall also sign the result cards.
- In the absence of the Referee, the ITO shall work with the relevant Chief Judge.
- In Cross Country, Road Running and Mountain Running competitions the appointed ICROs shall provide all necessary support to the competition organisers.
- They must be present at all times when an event to which they have been assigned is in progress.
- They should ensure that the conduct of the competition is in full conformity with IAAF

# International Race Walking Judges

- **A Panel of International Race Walking Judges shall be established by the IAAF Race Walking Committee using criteria approved by the IAAF.**
- **Race Walking Judges appointed for all international meetings must be members of the Panel of International Race Walking Judges/**
- **or one of the Panels of Area Race Walking Judges.**

# International Road Race Measurer

- **International Road Race Measurer shall be appointed to verify the courses where road events are held entirely or partially outside the stadium.**
- **The appointed course measurer shall be member of the IAAF/Association of International Marathon and Distance Races (AIMS) Panel of International Road Course Measurers (Grade "A" or "B").**
- **The course should be measured in good time before the competition.**
- **The measurer will check and certify the course if he finds it conforms to IAAF Rules for Road Races**
- **He shall cooperate with the Organising Committee in the course arrangements and witness the conduct of the race to ensure that the course run by athletes follows the same course that was measured and approved.**
- **He shall furnish an appropriate certificate to the Technical Delegate(s).**

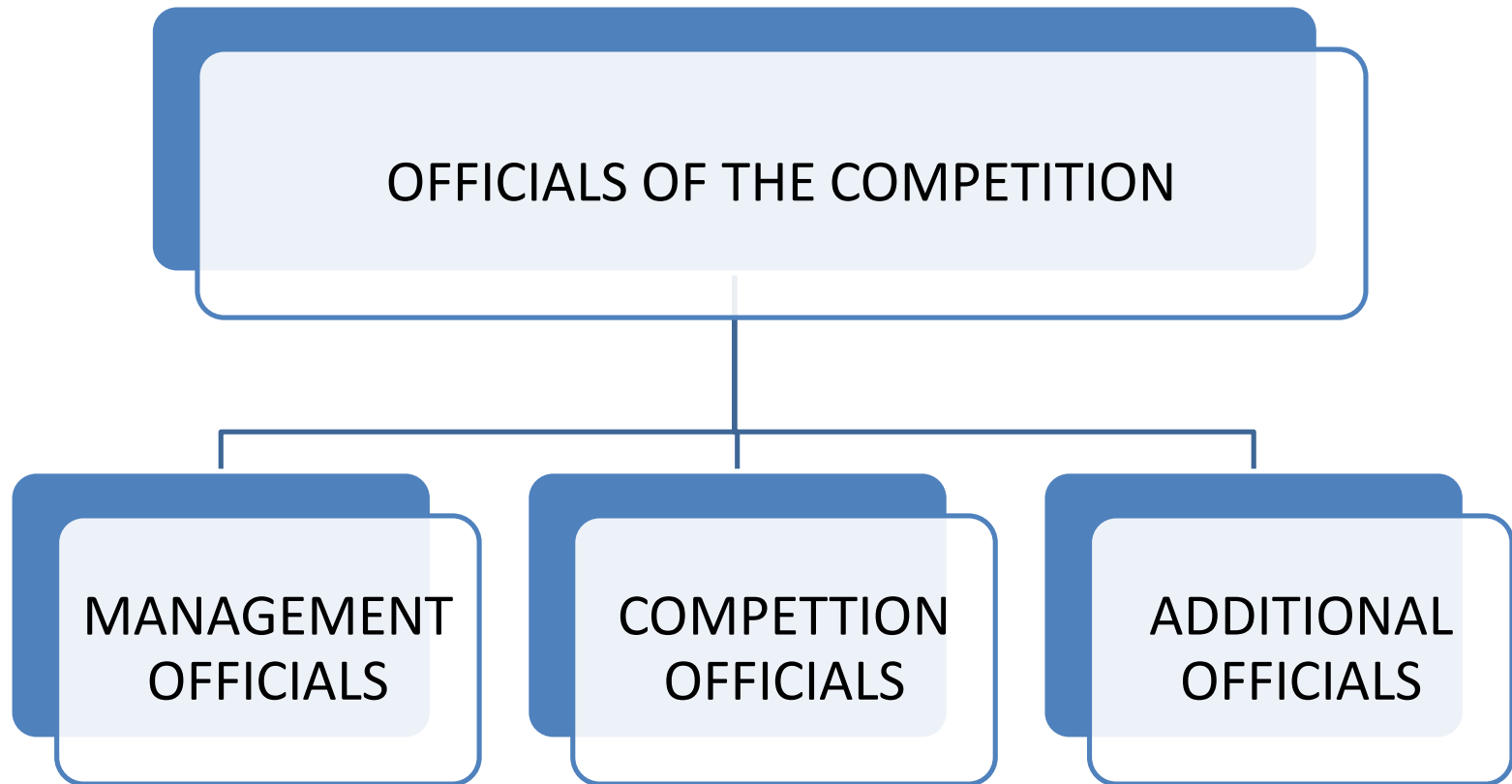
# **International Starter and International Photo Finish Judge**

- An International Starter and an International Photo Finish Judge shall be appointed by IAAF or the relevant Area Association.**
- The International Starter shall start the races (and undertake any other duties) assigned to him by the Technical Delegate(s).**
- The International Photo Finish Judge shall supervise all Photo Finish functions.**

# Jury of Appeal

- A Jury of Appeal, which should normally consist of three, five or seven persons shall be appointed.
- One of its members shall be the Chairman and another the Secretary. If and when considered as appropriate, the Secretary may be a person not included in the Jury.
- In instances where there is an appeal relating to Rule 230 (Race Walking), at least one member of the Jury shall be a current member of the Panel of International (or Area) Race Walking Judges.
- Members of the Jury of Appeal shall not be present during any deliberations of the Jury concerning
- any Appeal that affects, directly or indirectly, an athlete affiliated to his own Member Federation.
- The chair of the Jury shall ask any member implicated by this Rule to withdraw, in the event the Jury member has not already done so.
- The IAAF or other organisation responsible for the competition shall appoint one or more alternate Jury members to substitute for any Jury member(s) who are not able to participate in an Appeal.
- Furthermore, a Jury should likewise be appointed at other meetings where the organizers deem it desirable or necessary in the interest of the proper conduct of the competitions.
- The primary functions of the Jury shall be to deal with all appeals under Rule 146 (Protest & Appeals) , and with any matters arising during the course of the meeting which are referred to it for decision.

# OFFICIALS OF THE COMPETITION

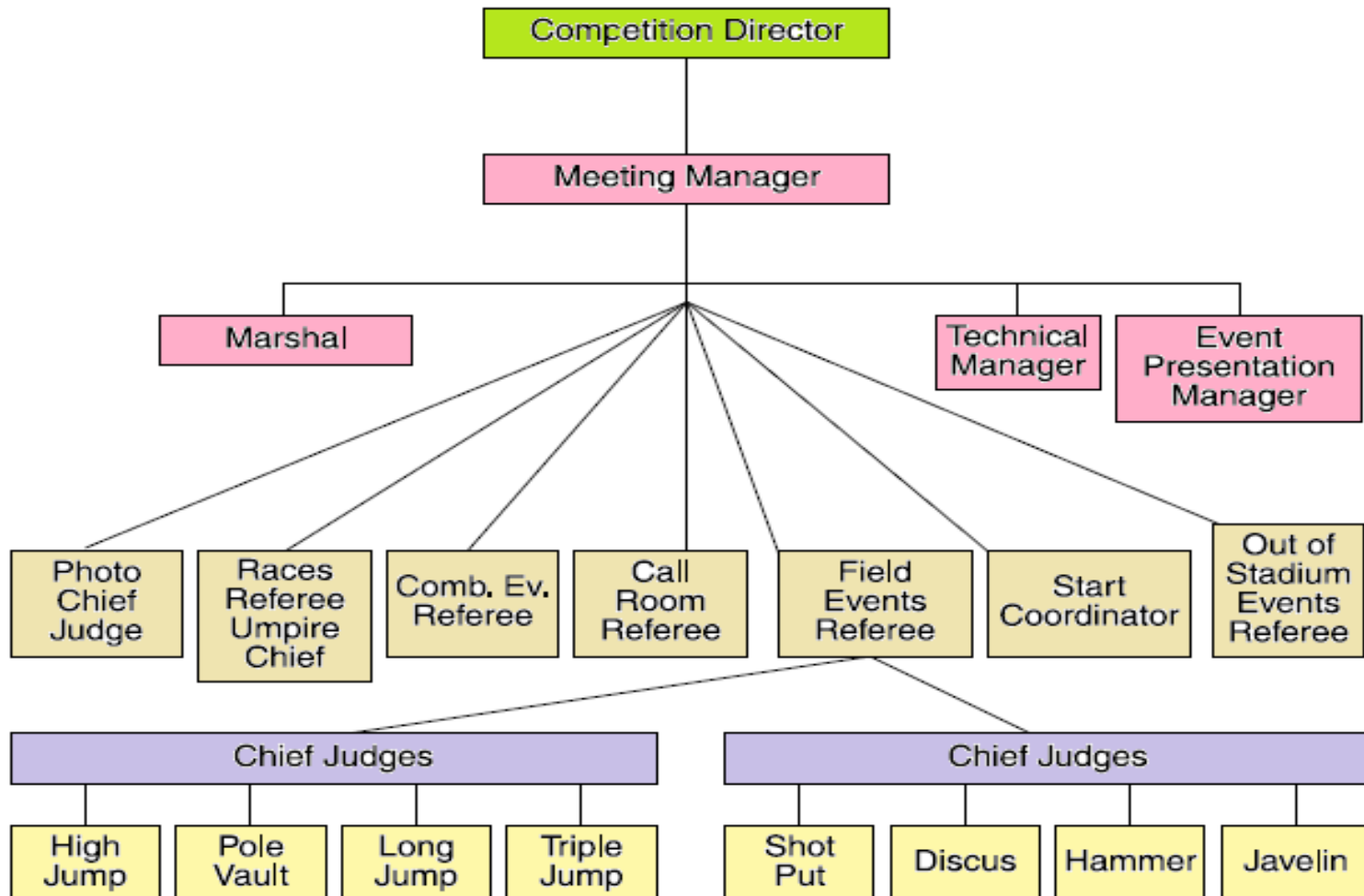


## Duties of Management Officials:

### **Competition Director :**

- Plan Technical organization in cooperation with Technical Delegate(s)
- He shall direct the interaction between the participants in the competition and, through the communication system, shall be in contact with all the officials.

# Competition Director





# Meeting Manager

- **Responsible for the correct conduct of meeting, Check Officials reporting for duty-substitute when necessary**
- **Authority to remove any Official who is not abiding by the Rules.**
- **In cooperation with the appointed Marshal, he shall arrange that only authorised persons are allowed in the centre of the arena.**
- **For competitions of longer than four hours or over more than one day, it is recommended that the Meeting Manager has an adequate number of Assistant Meeting Managers.**

## Technical Manager:

**Responsible for ensuring the track, runway, circles, sector and equipments are in accordance with Rules**

# Event presentation Manager: (EPM)

- The Event Presentation Manager shall plan, in conjunction with the Competition Director, the event presentation arrangements for a competition, in cooperation with the Organizational and Technical Delegate(s), as and where applicable.
  - He shall ensure that the plan is accomplished, resolving any relevant problems together with the Competition Director and the relevant Delegate(s).
- He shall also direct the interaction between the members of the event presentation team, using the communication system to be in contact with each of them.

# **Duties of Competition Officials**

# REFEREE

- One or More Referee appointed for Call Room , Track, Field, Combined events, Running & Race Walking Events outside the stadium
- Ensure that the rules are observed.
- Not act as Judge or Umpire.
- Authority to rule on any protest on conduct of the competition Warn or exclude any athlete for improper conduct (Yellow & Red card).

# REFEREE (Cont)

- **In case of a disciplinary case, the Call Room Referee has authority starting from the first Call Room up to the competition site.**
- **A Track Referee appointed to oversee the starts is designated the Start Referee.**
- **Circumstances arise –justice demands any events should be contested again, he shall have the authority to void the event and it shall be held again.**
- **Sign the result.**

## **Judges:**

Chief Judges for track, and for each field event shall co-ordinate the work of the judges.

# Judges (Track)

- All the judges must operate from same side, decide the order of finish, any dispute, refer to Referee, who shall decide.
- Provided with the elevated platform, placed at least 5 m from and in line with finish line.

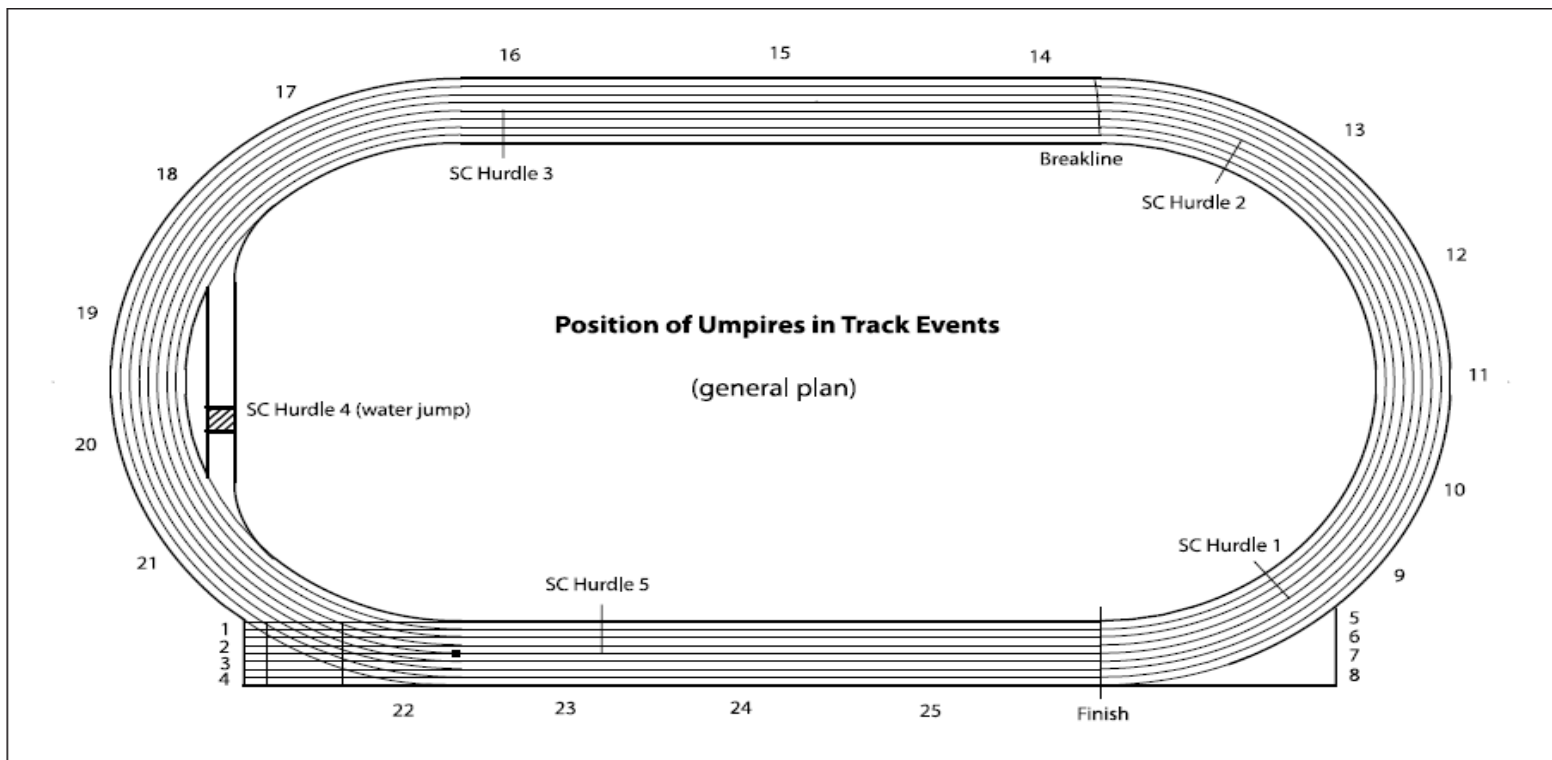


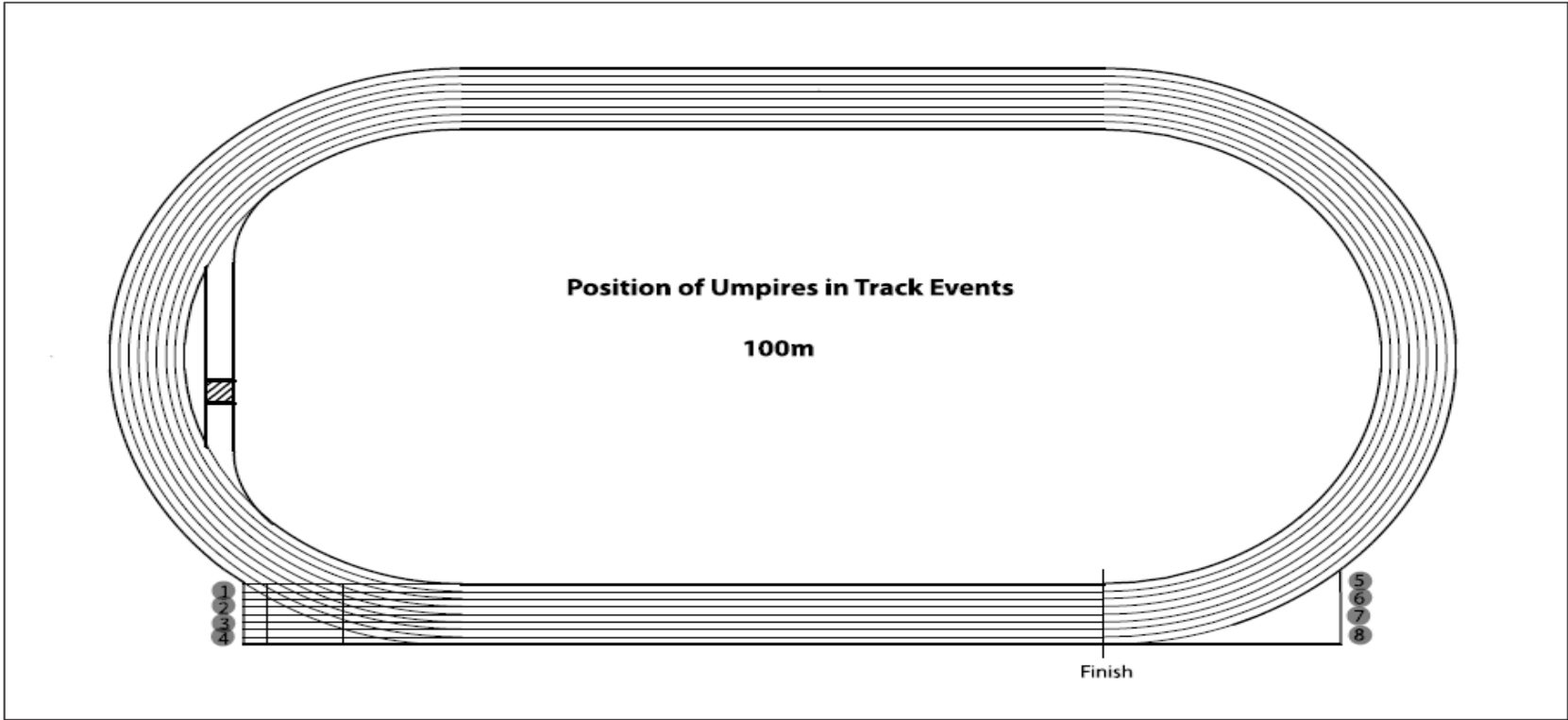
## Judges (Field):

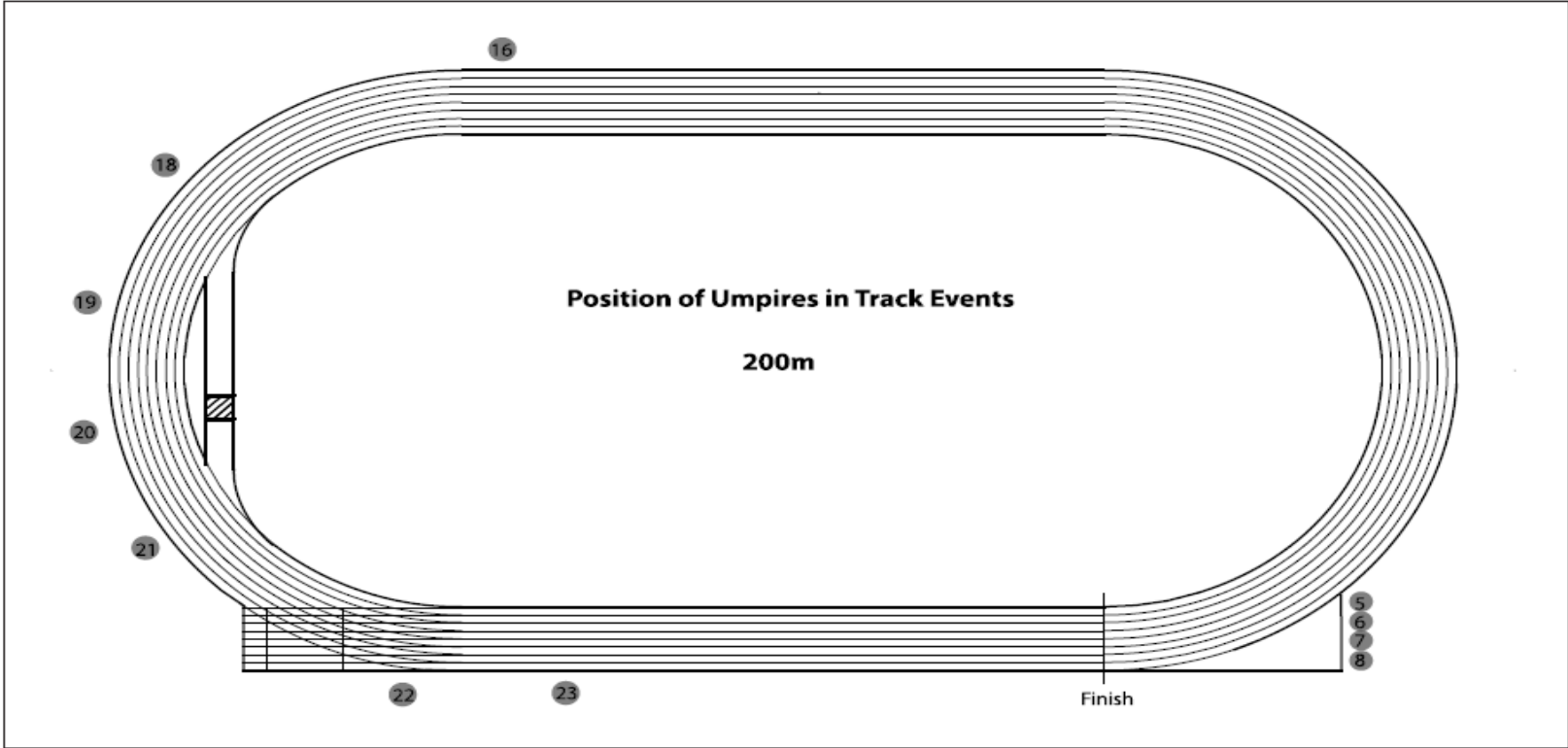
- Record each trial and measure each valid trial.
- At least two judges to keep record of all trials.
- Indicate the validity or non-validity of a trial by raising a white or red flag as appropriate.

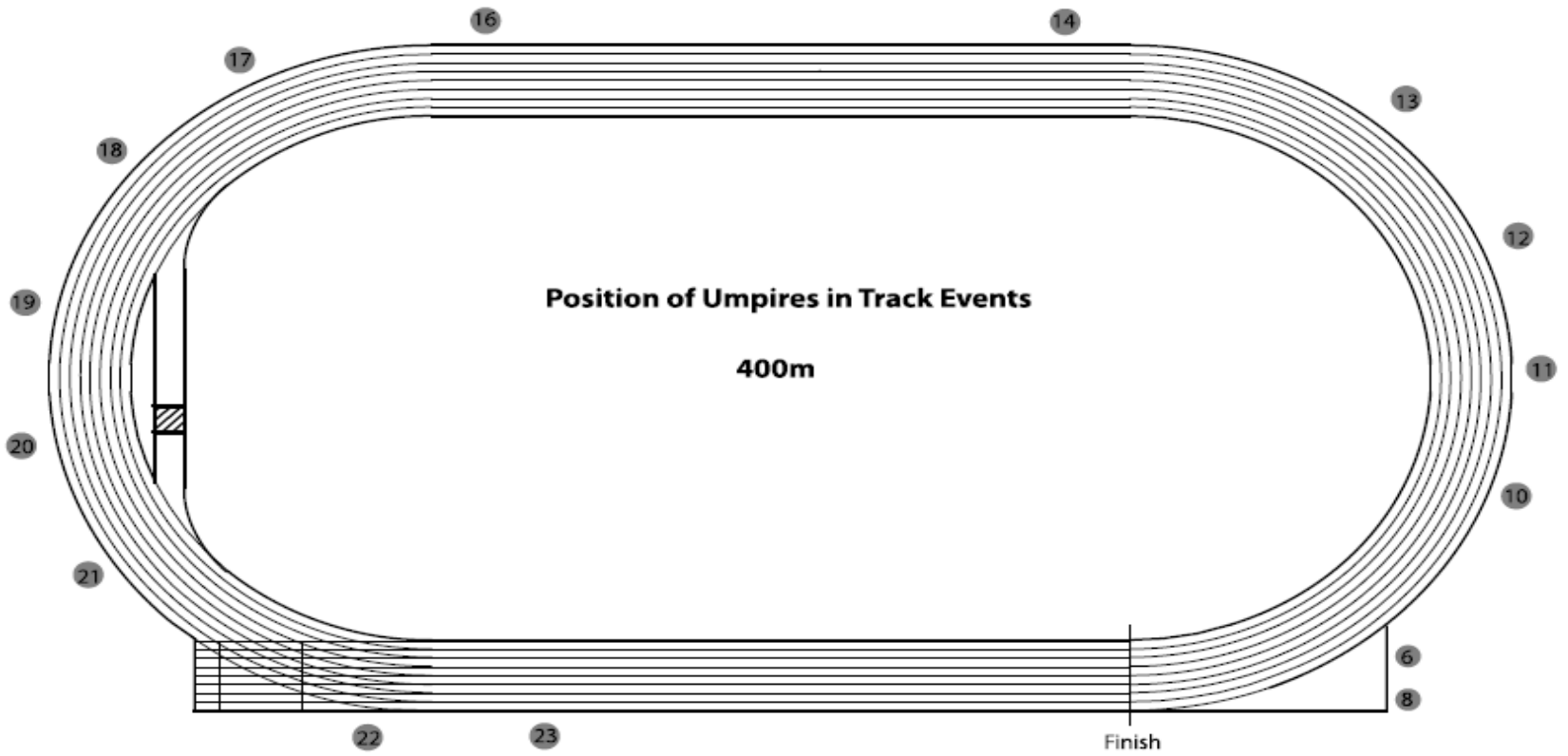
# UMPIRES ( Running & Race Walking Events)

- They are assistant to the referee **with out authority to make final decisions.**
- Positioned by the Referee.
- Make an immediate written report of Foul/ Violation to the Referee.
- Any such breach of rules should be indicated by raising **Yellow flag.**(mark the place of infringement with suitable materials )
- Sufficient number of Umpires shall appointed to supervise the Take over Zone.



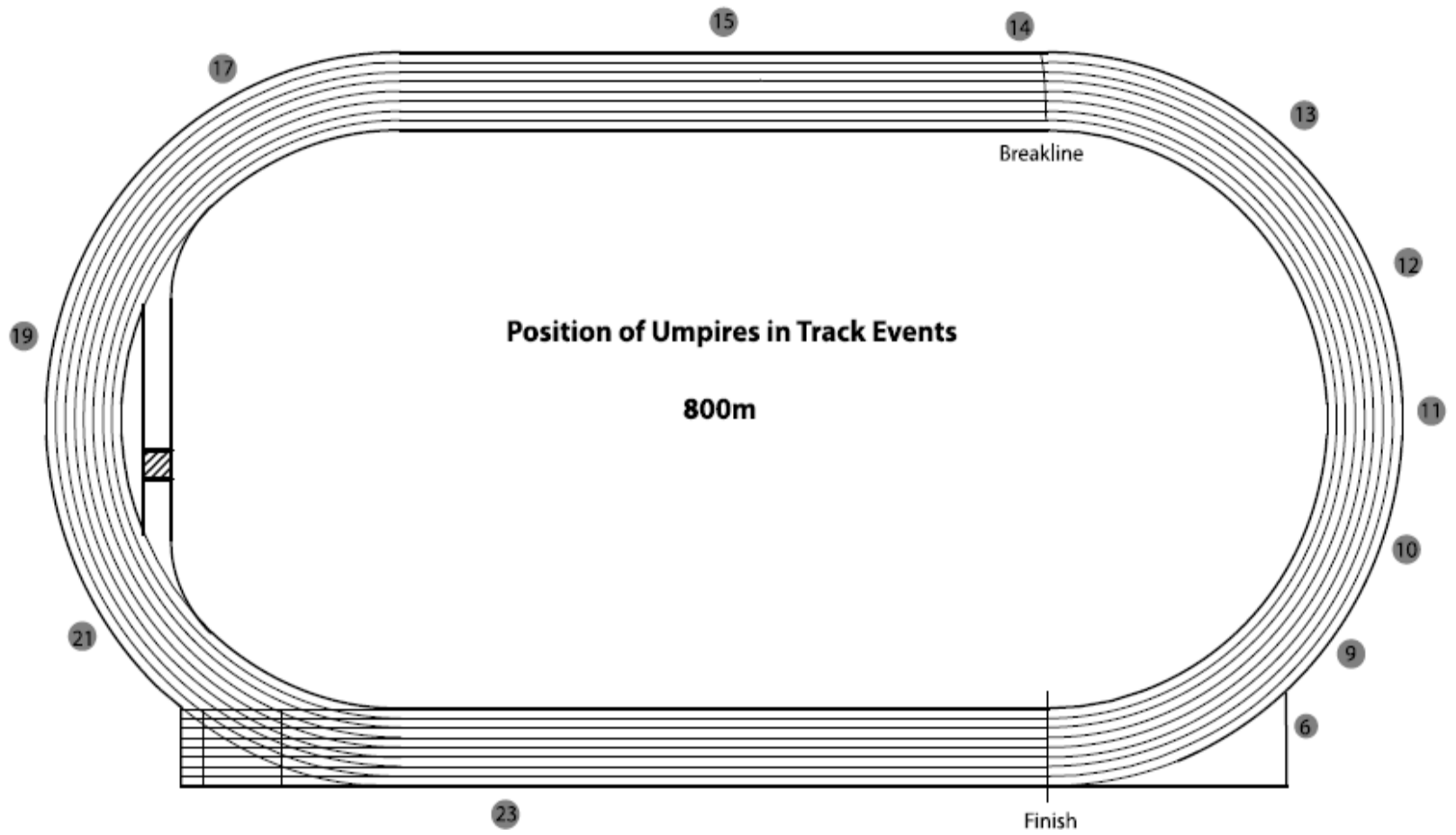


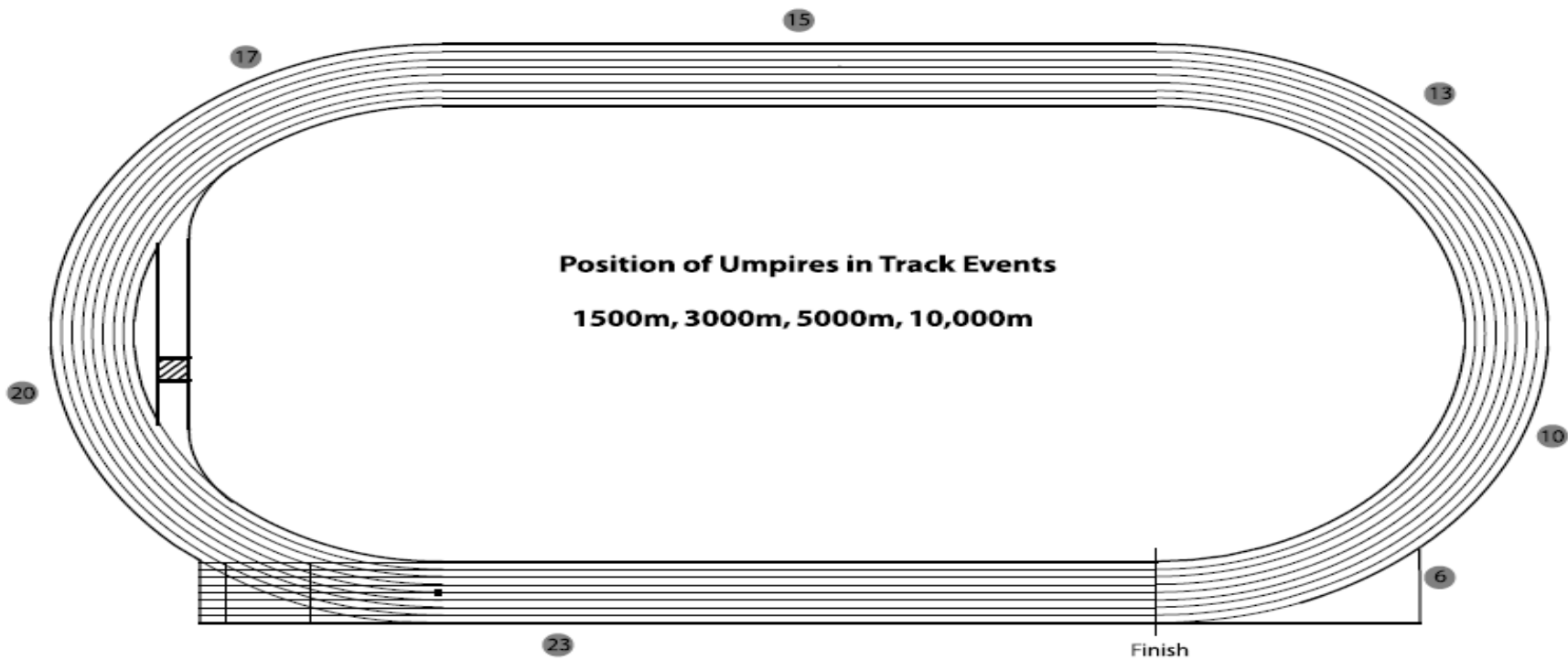




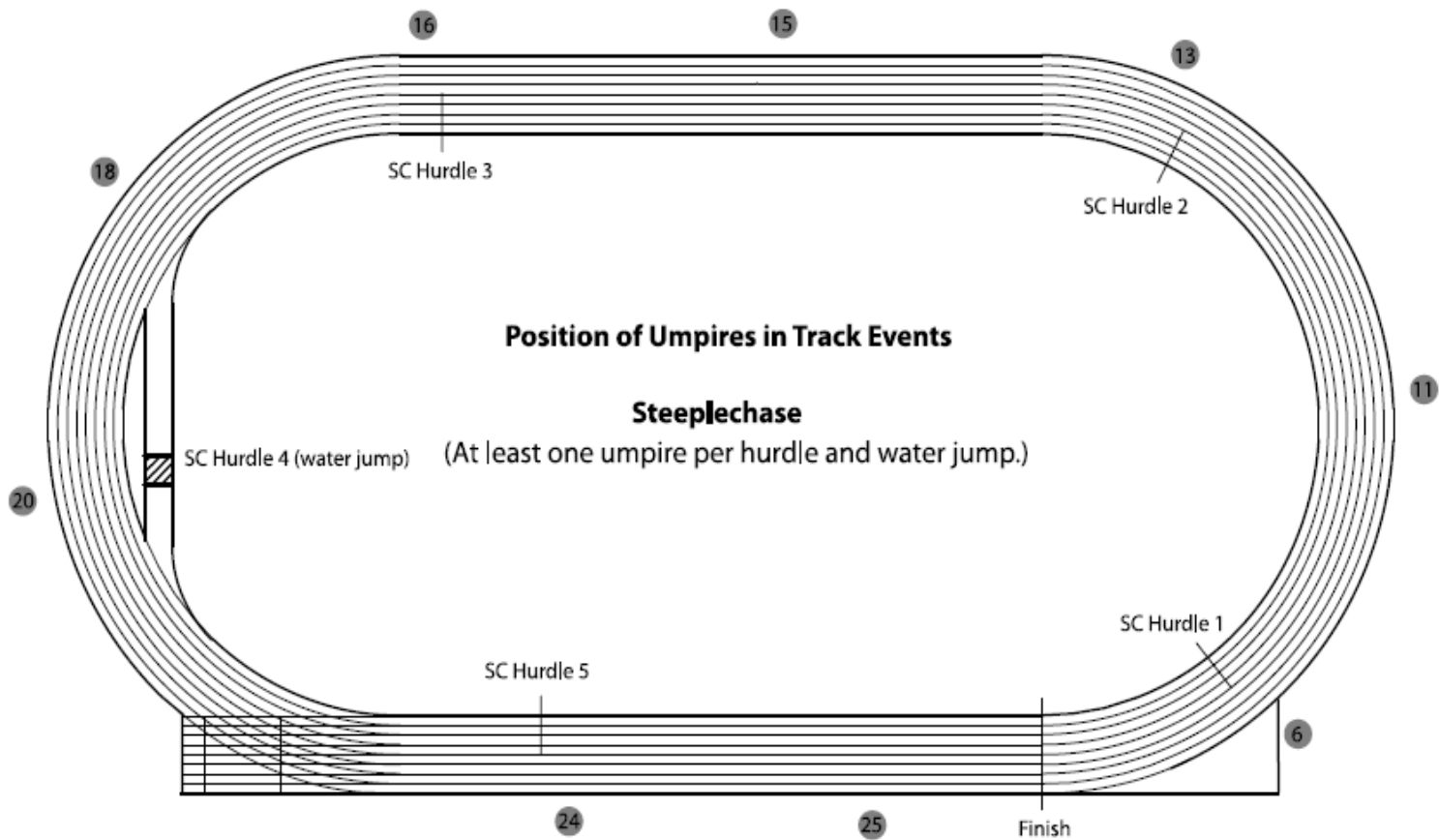
**Position of Umpires in Track Events**

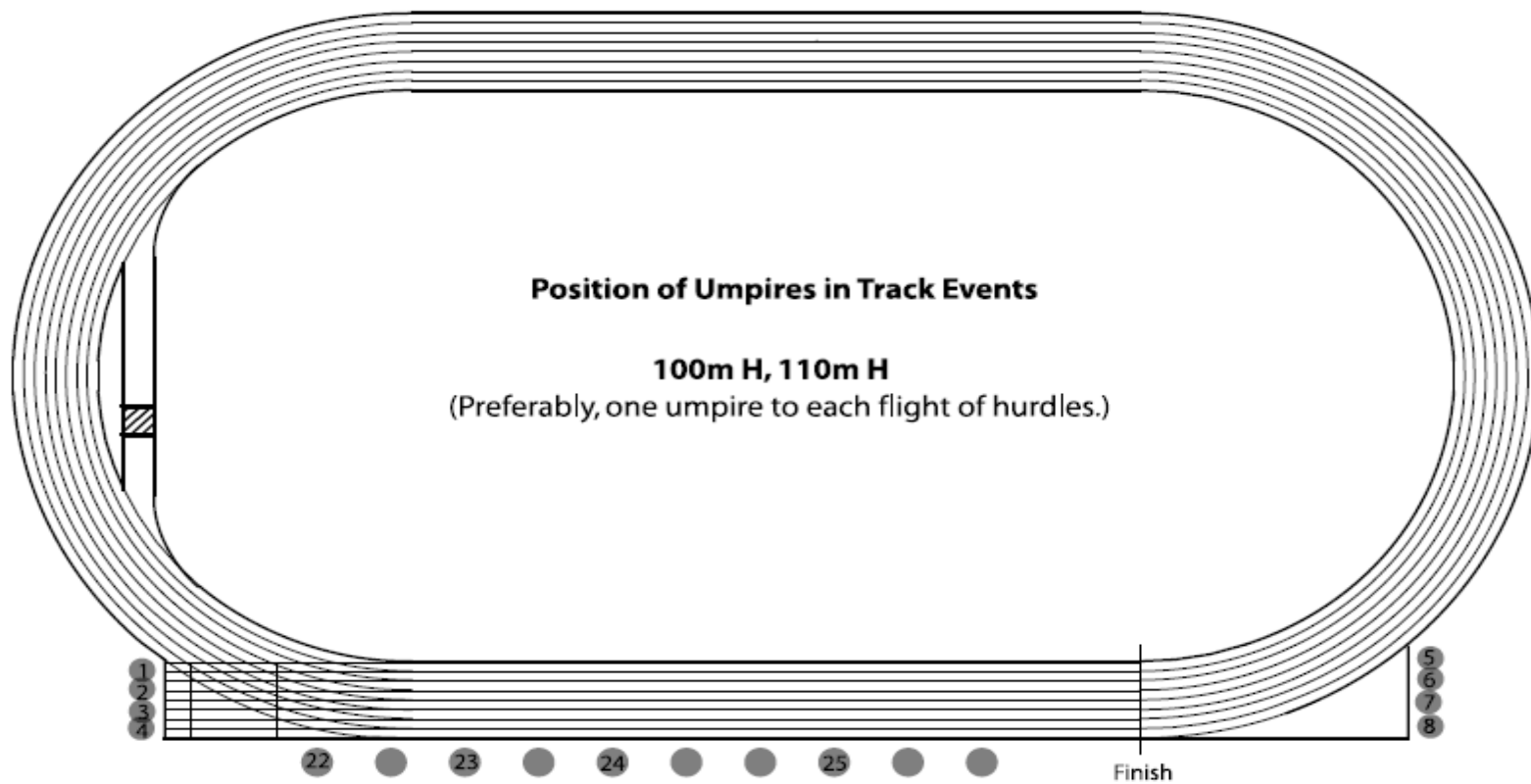
**400m**

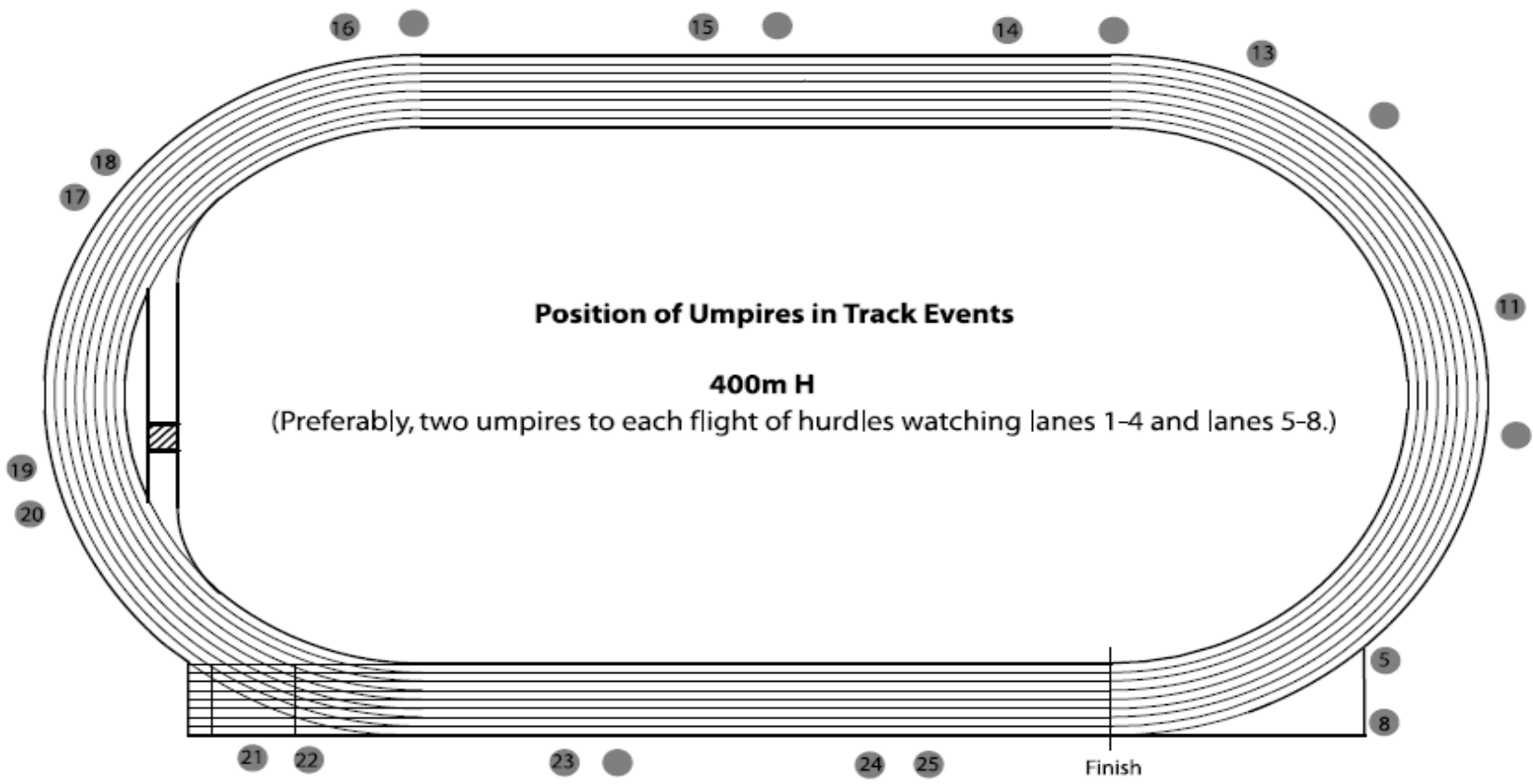








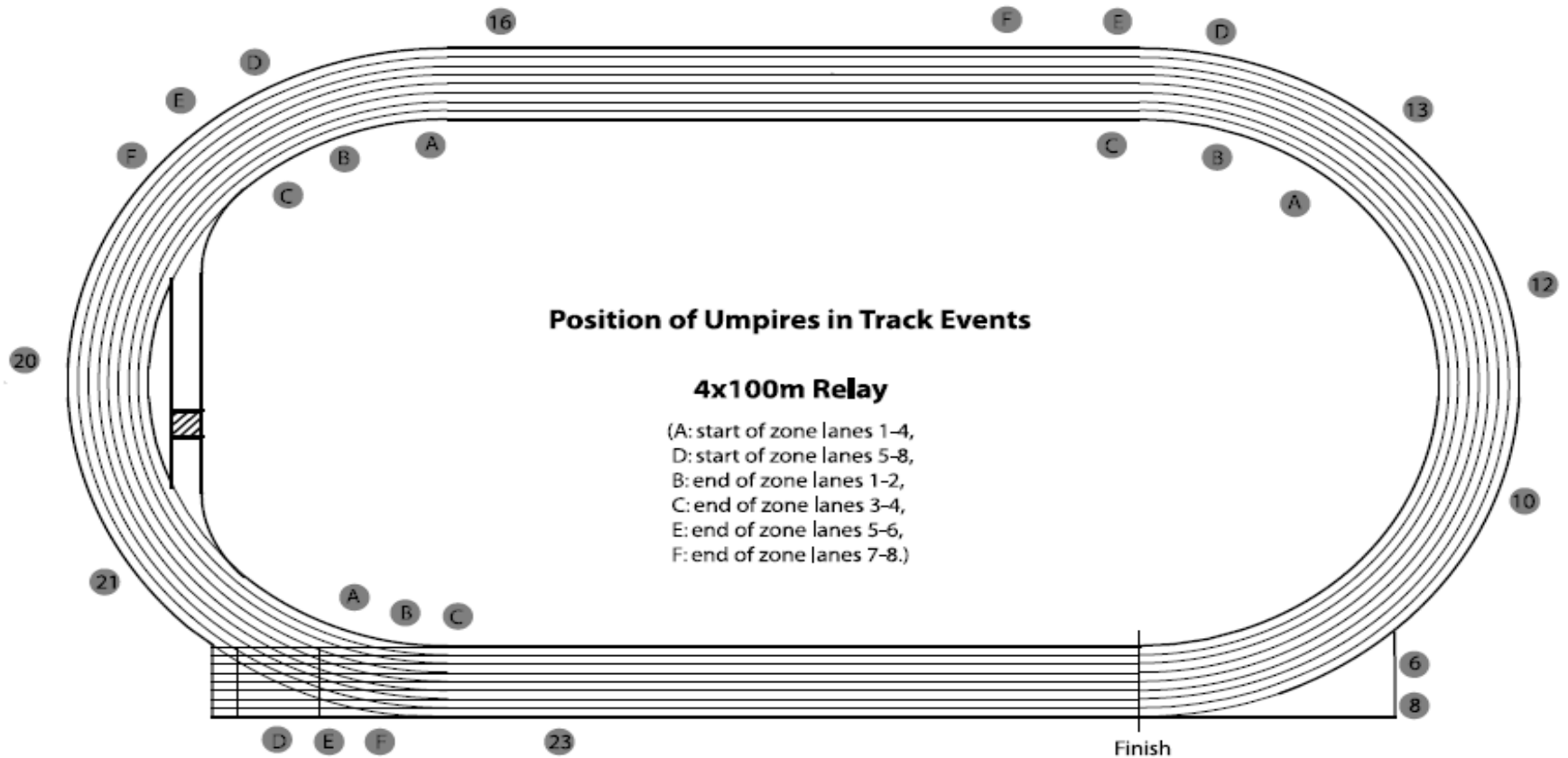


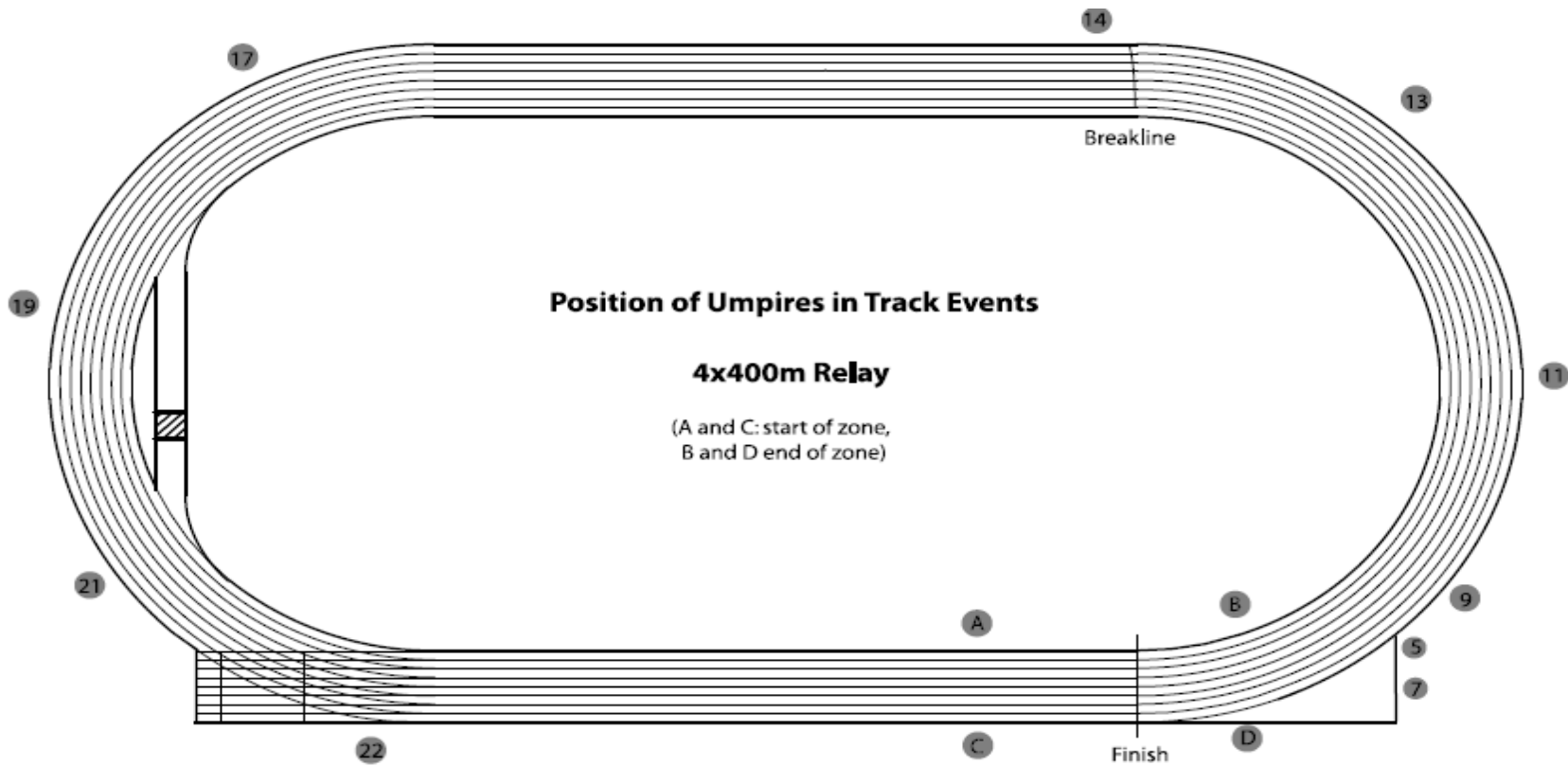


**Position of Umpires in Track Events**

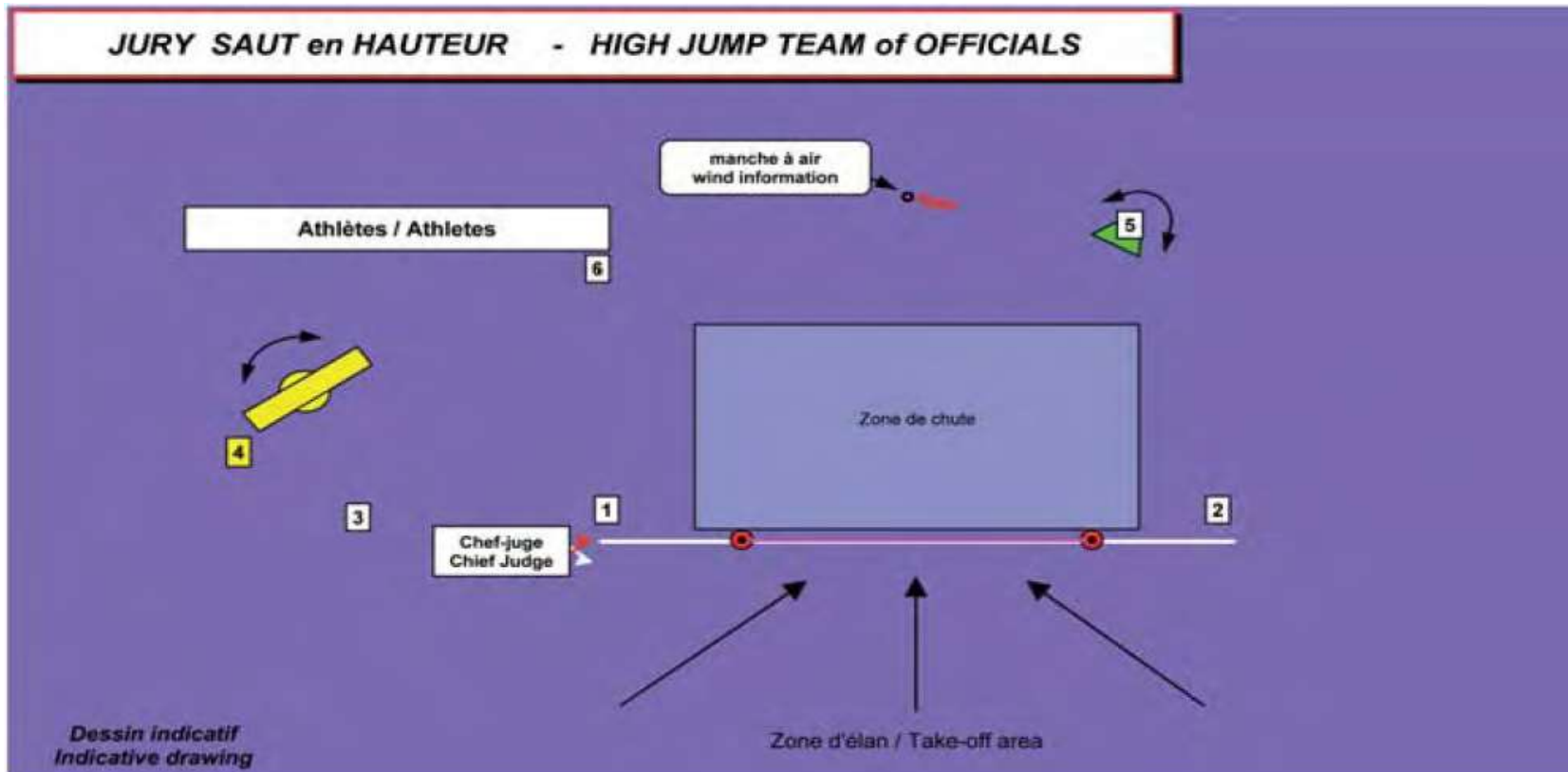
**400m H**

(Preferably, two umpires to each flight of hurdles watching lanes 1-4 and lanes 5-8.)





## JURY SAUT en HAUTEUR - HIGH JUMP TEAM of OFFICIALS



1 & 2 : Two Judges on either side of the landing area

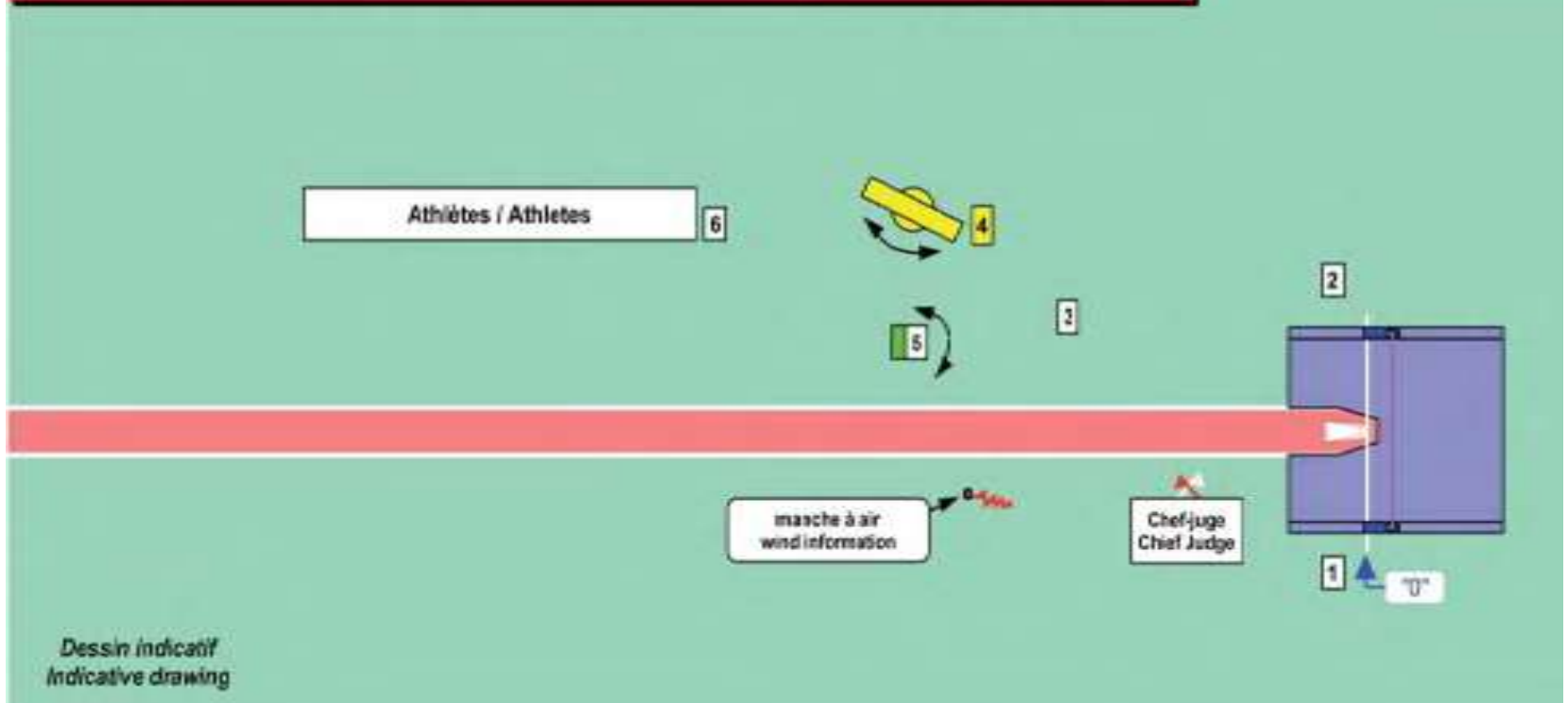
3: A Recorder keeping the results sheet and calling the athletes

4: A Judge in charge of the scoreboard (trial-number-result).

5: A Judge in charge of the clock indicating to the athletes that they have a certain time to take trial

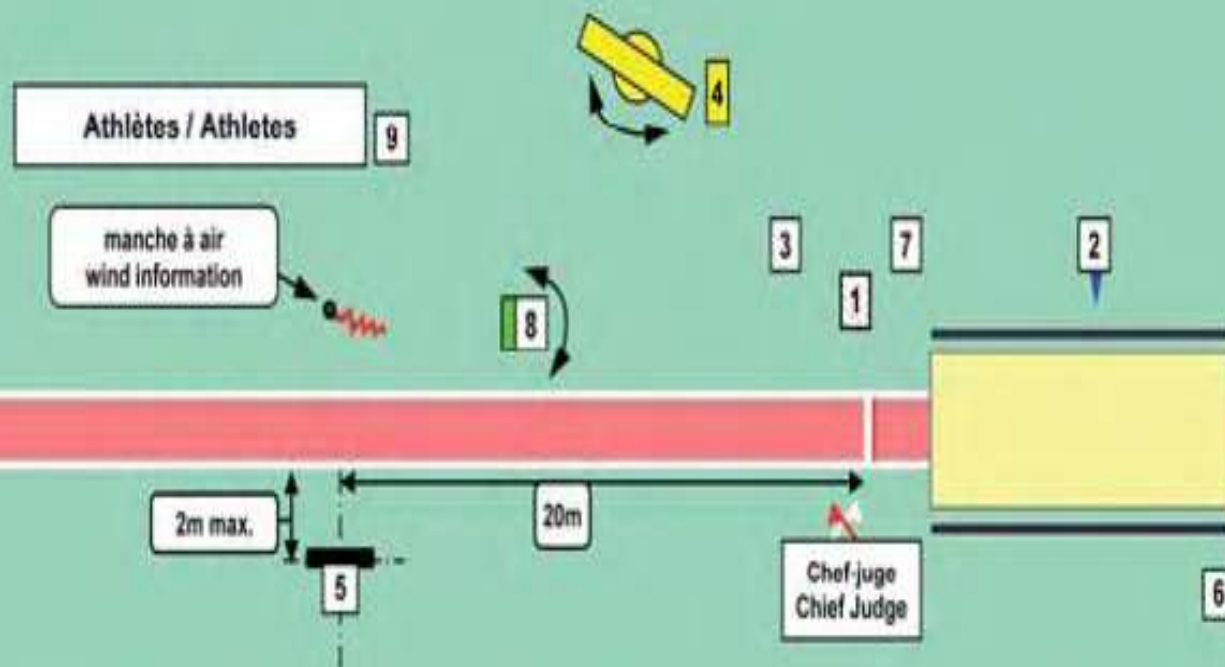
6: A Judge in charge of athletes

## JURY de SAUT à la PERCHE - POLE VAULT -TEAM of OFFICIALS



- - Two Judges (1) and (2), on either side of the back of the box
- - A Recorder (3) keeping the results and calling the athletes.
- - A Judge (4) in charge of the scoreboard (trial-number-result).
- - A Judge (5) in charge of the clock indicating that the athletes have certain time to take trial.
- - A Judge (6) in charge of athletes.

# JURY SAUT en LONGUEUR - LONG JUMP -TEAM of OFFICIALS



Dessin indicatif  
Indicative drawing

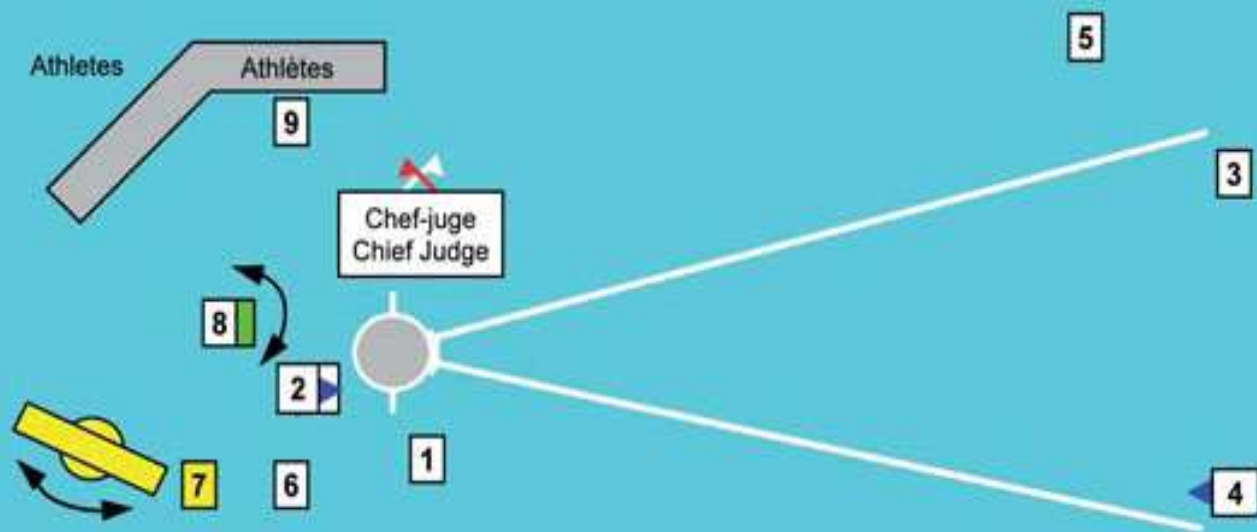


# LONG JUMP

- 2: A Judge at the landing point will hold the tape on the 0,
- 3: A Recorder keeping the Results sheet and calling athletes.
- 4: A Judge in charge of the scoreboard for the results
- 5: A Judge in charge of the wind Gauge (20 metres from the takeoff board)
- 6: One or more judges or Assistants in charge of leveling the landing zone after each trial.
- 7: A Judge or assistant in charge of replacing the plasticine .
- 8: A Judge in charge of the clock indicating to the athletes that they have a certain time to take their trial .
- 9: A Judge in charge of the athletes



**JURY LANCER DU POIDS  
SHOT PUT -TEAM of OFFICIALS**



# SHOTPUT

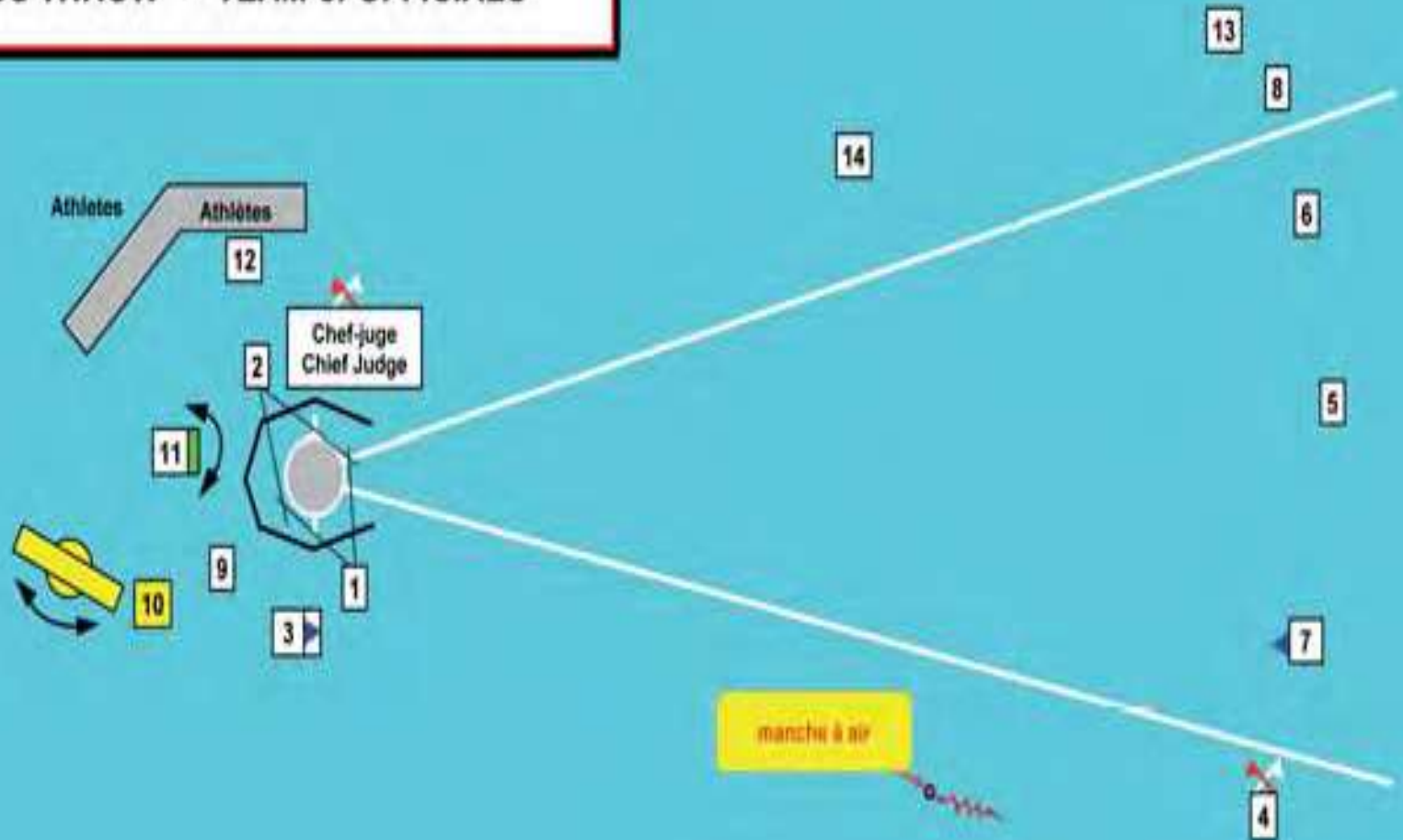
The Chief Judge must supervise the whole of the event and check the measurements.

- A Judge (2) holding the measuring apparatus in such a way that it passes through the centre of the circle.
- A Judge (3) placing, immediately after the throw, a marker enabling the throw to be measured.
- A Judge (4) holding the measuring apparatus on the zero mark on the point where the marker has been placed.
- A Judge (5) in charge of placing the small flags indicating each athlete's best throw. The small flag is placed along a strip or line outside the sector in order to avoid it being hit by an implement.

A Recorder (6) keeping the results sheet and calling the athletes.

- A Judge (7) in charge of the results score-board .
- A Judge in charge of the clock indicating to the athletes that they have a certain time to take their trial (8).
- A Judge in charge of the athletes (9).

**JURY LANCER DU DISQUE**  
**DISCUS THROW - TEAM of OFFICIALS**



# DISCUS

Near the circle: - Two judges checking that the throw has been made correctly and measuring the throw. In a large number of national competitions the Chief Judge, takes on this duty.

- A Judge (2) placed opposite judge (1) checking from his side that the throw is correct.
- A Judge (3) holding the tape measure so that it is held taut and passes through the centre of the circle.

At the landing:

- A Judge (4) responsible for the landing zone and indicating with the help of flags whether the throw is valid or not.
- Two Judges (5 and 6) who will watch the exact place of landing will have a marker which he will place in the ground to enable the measuring of the throw.
- A Judge (7) who will hold the tape measure on the zero mark at the spot where the marker has been placed.
- A Judge (8) in charge of placing the small flags indicating each athlete's best throw along a strip or line outside the sector in order to avoid them being hit by an implement. In important
- At the landing, one person or two responsible for sending back the discus that has been thrown (13).

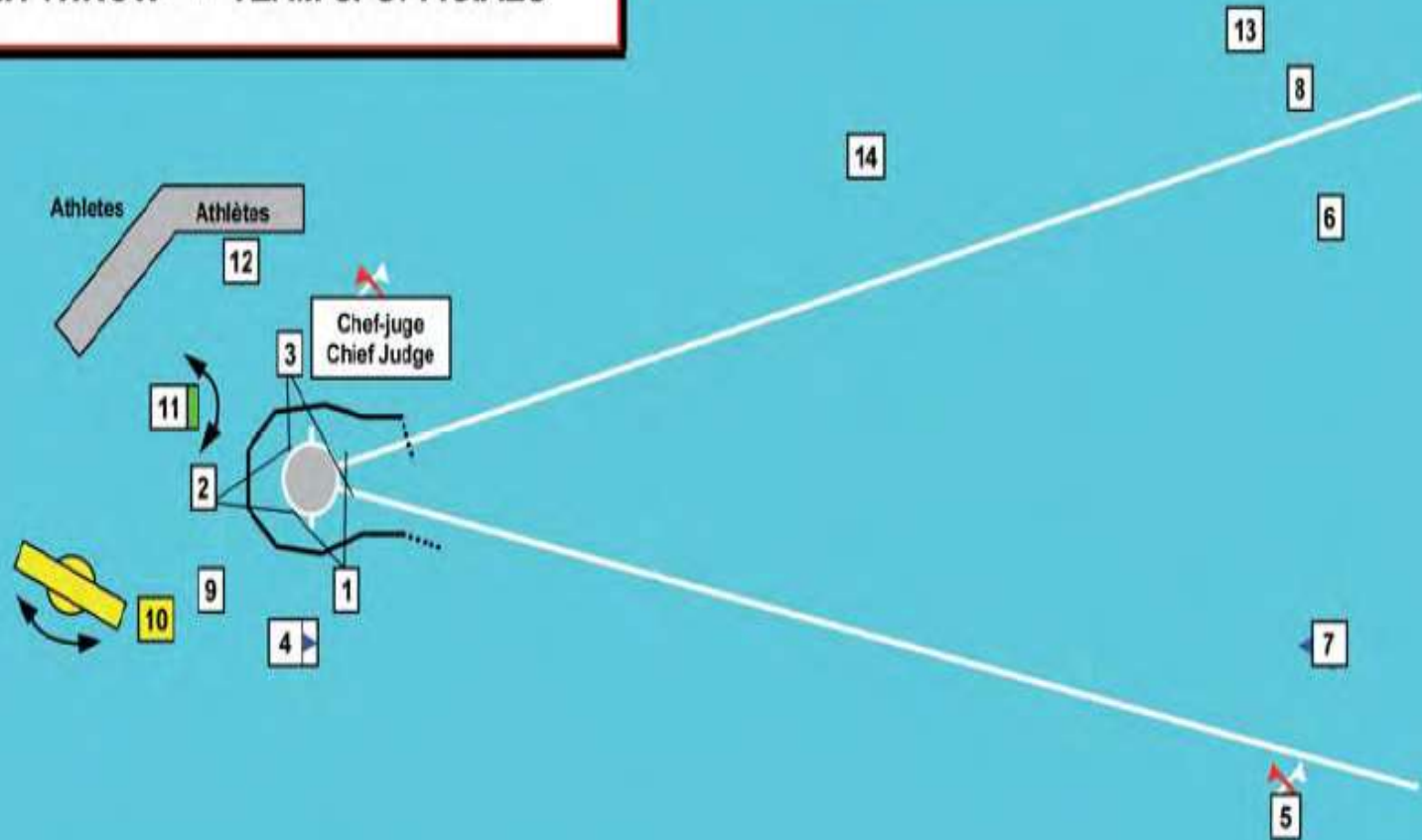
Near the circle:

- A Recorder (9) keeping the results sheet and calling the athletes.
- A Judge (10) in charge of the results scoreboard (trial-number-result).
- A Judge in charge of the clock indicating to the athletes that they have a certain time to take their trial (11).
- A Judge in charge of the athletes and of the discus near the circle (12).

Half-way between the circle and the landing zone:

- A Judge will make sure that the tape measure is taut in order to ensure a correct measurement (14).

**JURY LANCER DU MARTEAU  
HAMMER THROW - TEAM of OFFICIALS**



# HAMMER

The Chief Judge, must supervise the whole event and check the measurements.

Near the circle:

- Two judges checking that the throw has been made correctly and measuring the throw. In a large number of national competitions the Chief Judge, takes on this duty
- Three Judges (1), (2) and (3) placed around the cage to check that the throw, at the start, is correct.
- A Judge (4) holding the tape-measure so that it is held taut and passes through the centre of the circle.

At the landing:

- A Judge (5) responsible for the landing zone and indicating with the help of flags whether the throw is valid or not.
- A Judge (6) who will watch the exact place of the landing. He will have a marker which he will place in the ground to enable the measuring of the throw.
- A Judge (7) who will hold the tape measure on the zero mark at the spot where the marker has been placed.
- A Judge (8) in charge of placing the small flags indicating each athlete's best throw along a strip or line outside the sector in order to avoid them being hit by an implement. In important
- At the landing one person (or two) responsible for sending back the hammer that has been thrown (13).

Near the circle:

- A Recorder (9) keeping the results sheet and calling the athletes.
- A Judge (10) in charge of the results scoreboard (trial-number-result).
- A Judge in charge of the clock indicating to the athletes that they have a certain time to take their trial (11).
- A Judge in charge of the athletes and of the hammers placed near the circle (12).

Half-way between the circle and the landing zone:

- A Judge will make sure that the tape measure is taut in order to ensure a correct measurement (14).



**JURY LANCER DU JAVELOT**  
**JAVELIN THROW - TEAM of OFFICIALS**



# JAVELIN

- The Chief Judge, must supervise the whole event and check the measurements.

## **Near the runway:**

- One judge (1) checking that the throw has been made correctly and measuring the throw. In a large number of national competitions the Chief Judge, takes on this duty.

A judge (2) holding the tape-measure so that it passes through the centre of the arc of the circle.

## **At the landing:**

- A judge (3), responsible for the landing zone, and indicating with the whether the throw is valid or not.
- Two Judges (4) and (5) who watch the place where the tip of the metal head touched the ground. One of these judges holds a marker which he pushes in the ground.
- A Judge (6) who will hold the tape-measure and who must place the zero point on the spot where the marker has been placed.
- A Judge (7) in charge of placing the small flags indicating each athlete's best throw.

These flags must be placed along a strip or line outside the sector in order to avoid them being hit by a javelin.

- one person (or two) responsible for sending back the javelins that have been thrown (12).

## **Near the runway zone:**

- A Recorder (8) keeping the results sheet and calling the athletes.
- A Judge (9) in charge of the results scoreboard (trial-number-result).
- A Judge in charge of the clock indicating to the athletes that they have a certain delay to take their trial (10);
- A Judge in charge of the athletes and of the javelins placed near the runway (11).

## **Half-way between the runway and the landing zone:**

- A judge will make sure that the tape-measure is taut in order to ensure a correct measurement (13).

# Time Keeper & Photo Finish Judges:

- Chief time keeper allot the duties for time keepers
- These time keepers shall act as back-up time keepers when fully automatic photo finish equipment is in use
- The timekeeper shall be in line with finish & outside the track (at least 5m away-elevated platform).

- **The time shall be taken from the flash/smoke of the gun to the moment at which any part of the body (torso) reaches vertical plane of the nearer edge of the finish line.**
- **Three official time keepers (including chief) & one /two additional time keepers shall time winner of every event(additional watches considered only when main watches fails**

Each time keeper shall act independently with out showing his watch to, or discussing his time with any other person, shall enter the time in the official form, after singing hand it to the chief time keeper.

For hand time races on the track time shall be read to the next longer  $1/10^{\text{th}}$  of a second(eg:11.11 read as 11.2.)

For races partly /entirely outside the stadium shall be converted to next longer full second.(eg:2:08.34.2 read as 2:08.35. for marathon) if two of the three watches agree & third disagrees, the time record shall be the official time.

If all the three watches disagree the middle time shall be official

if only two watches, & if they differ the longer time shall be the official

# Start Coordinator

The Start Coordinator will be in charge of the following tasks:

- (a) To **allocate the duties of the start team judges**, assigning the task of giving the start to the member of the team who, in his opinion, is the best for the event.
- (b) To **supervise** the duties to be fulfilled by **each member** of the team.
- (c) To **inform the Starter**, after receiving the relevant order from the Competition Director, that **everything is in order** to initiate the start procedure (eg. that the Timekeepers, the Judges and when applicable the Chief Photo Finish Judge and the Wind Gauge Operator are ready).
- (d) To act as an **interlocutor** between the **technical staff of the timing equipment company and the Judges**.
- (e) To keep all papers produced during the start procedure including all documents showing the reaction times and/or false start waveform images if available.
- (f) To ensure that the rules related to starting are observed.

- The Start Coordinator shall assign a specific task and position to each Recaller, who is obliged to recall the race if any infringement of the rules is observed.
- After a recalled or aborted start the Recaller shall report his observations to the Starter who decides whether and to whom a warning shall be issued.



## **Starter:**

- **Entire control of the competitors .**
- **Before the start signal is given the starter shall ascertain the readiness of Timekeepers, Judges, Photo Finish Judge & Wind Gauge Operator.**
- **He shall position himself so that he has the full visual control over all runners during the start.**
- **The warning and disqualification during start may be applied only by the starter.**

# Recallers

- One or more Recallers shall be provided to assist the starter. (for Staggered start events, There shall be at least two recallers).
- They shall place themselves so that he can see each competitor assigned to him

# **Starter's Assistant:**

- **Check the competitor .**
- **Stations the Competitors from left to right Facing the direction of the run. Assemble the competitor approximately 3m behind the start line.**
- **The shall be responsible for readiness of batons for relays.**

# STARTER -

Positions in races started in lanes or with staggered start



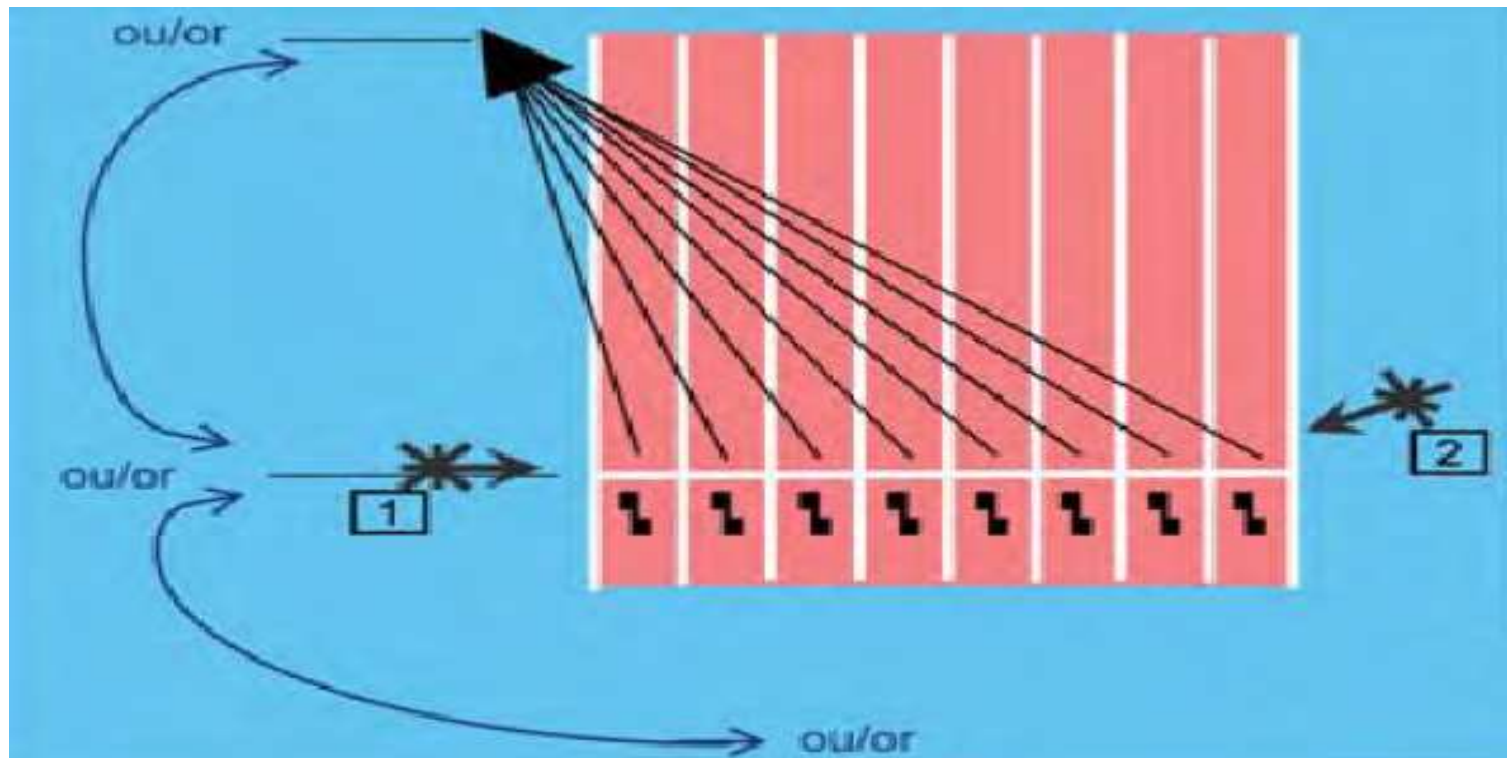
STARTER



RECALLER



STARTER using a microphone connected to loudspeakers placed in each lane (to hear the voice and the gun shot of the Starter)



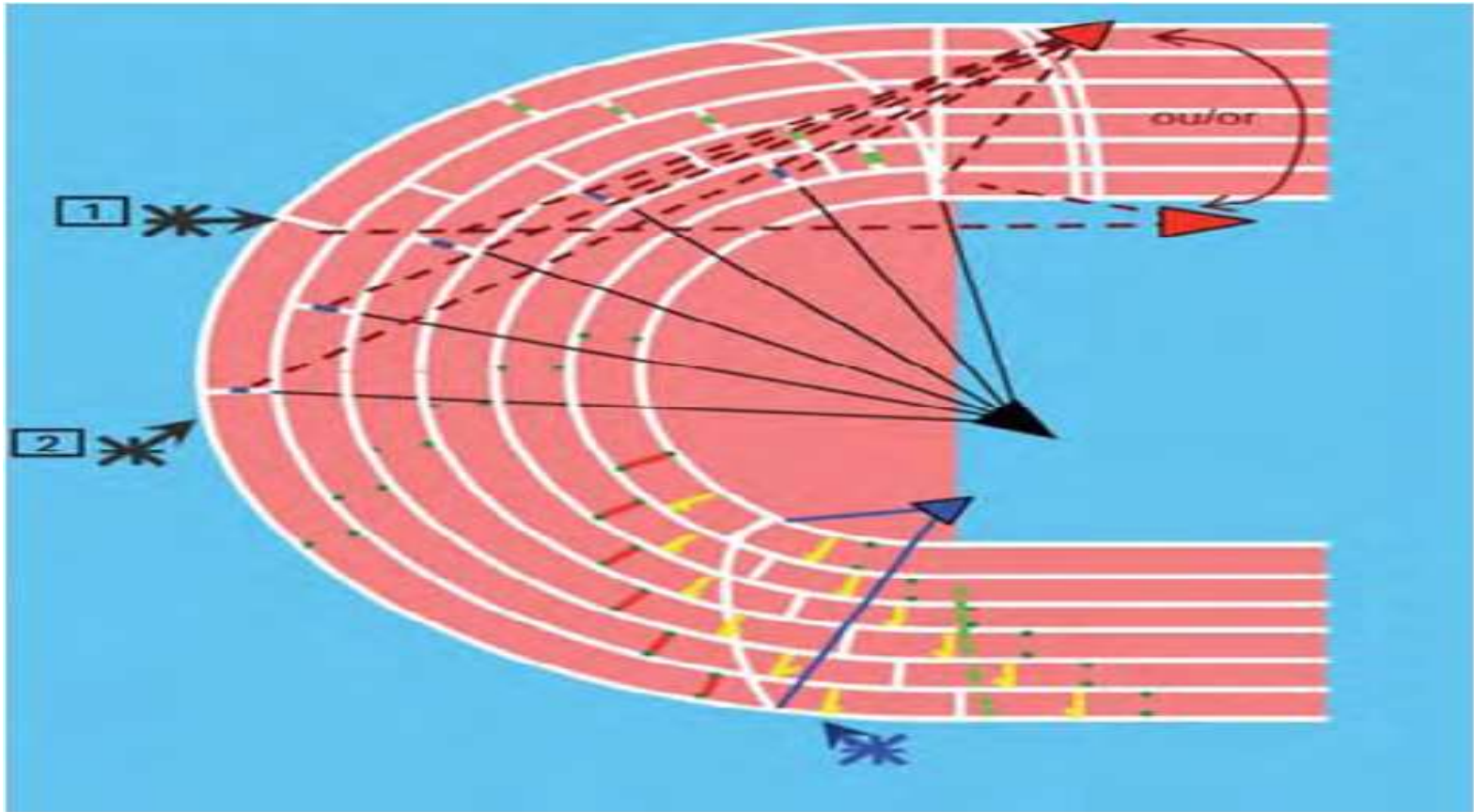
**STARTER**



**RECALLER**



**STARTER** using a microphone connected to loudspeakers placed in each lane (to hear the voice and the gun shot of the Starter)



**STARTER**



**RECALLER**

**STARTER** using a microphone connected to loudspeakers placed in each lane (to hear the voice and the gun shot of the Starter)

# Lap Scorers:

- **One Lap Scorer for 4 competitor (6for Walking) shall be appointed.**
- **One lap scorer shall be responsible for maintaining the display of laps remaining at the finish line.**
- **The final lap shall be signaled to each competitor usually by ringing a bell**

- **Competition Secretary:**Collect results from Referee&Convey to the Announcer & Competition Director.
- **Marshal** :Control the arena – not allow any person other than the Competitors & Officials.
- **Announcer:** He shall inform the public the relevant details regarding the events.



- **Official Surveyor: Check the Marking & Furnish appropriate certificate to the Technical Manager.**
- **Wind Gauge Operator: Communicate the details of wind velocity to the competition secretary.**
- **Measurement judge (electronics): Ensure the equipment relating to the electronics & overall charge of the Operation**

- **Call Room Judges:** Ensure the Uniform, Bibs, Shoes, Spikes, Advertisements. Non –authorized material cannot be taken in to the arena.
- **Advertising Commissioner:** Supervise the advertising rules & regulations.

**Thank You**